

SOLSTICE® L40X (R-455A)

CHARACTERISTICS

Solstice L40X (R-455A) is a zeotropic blend, mildly flammable refrigerant (A2L) designed to serve as an alternative for low-, medium-, and high-temperature applications in new systems. Its GWP of only 146 (IPCC AR5) makes it a long-term, F-Gas-compliant solution. It provides a close capacity match to R-404A, a similar operating envelope when compared to propane, and high energy efficiency.

APPLICATIONS

Solstice L40X (R-455A) is an excellent refrigerant for commercial refrigeration applications like plug-ins, condensing units, foodservice, water-loop and monoblock systems. Its low GWP, extended operating envelope, high efficiency, high critical temperature and low critical pressure, also make it a potential match for other applications such as chillers, heatpumps, transport refrigeration, etc.

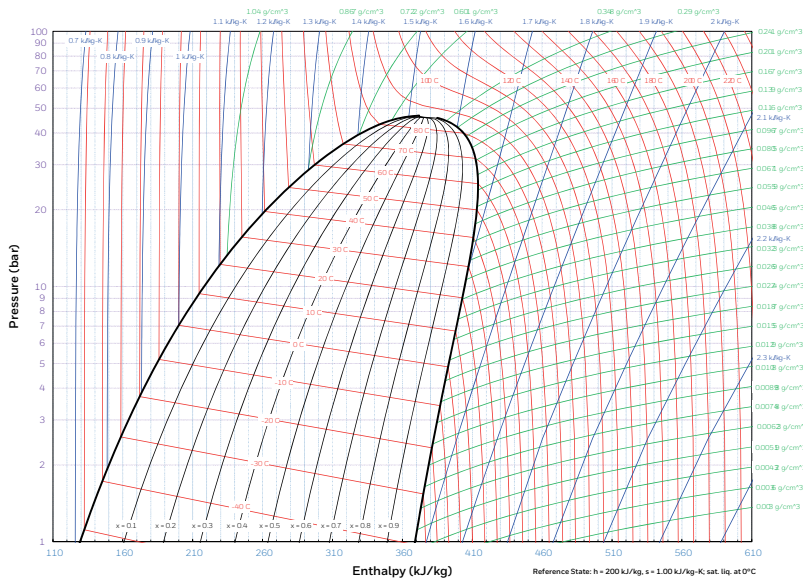
PROPERTIES (S.I. UNITS)

SOLSTICE® L40X (R-455A)	
CLASS/TYPE	Zeotropic blend
FORMULA	75.5%/21.5%/3% R-1234yf/R-32/R-744
KIND	HFC / HFO
APPEARANCE	Colourless
ODP (ODP R11=1)	0
GWP REV /5TH IPCC	146
ASHRAE STD. 34 SAFETY CLASS	A2L
ATEL/ODL (kg/m ³)	0.393
PRACTICAL LIMIT (kg/m ³)	0.086
LFL (% VOL)	11.8-12.9
REACH	Registered
MOLECULAR WEIGHT	87.5 kg/kmol
BOILING TEMPERATURE AT BUBBLE POINT	-52 °C
CRITICAL TEMPERATURE	85.6 °C
CRITICAL PRESSURE	46.5 bar
CRITICAL VOLUME	0.0022 m ³ /kg
CRITICAL DENSITY	454.9 kg/m ³
VAPOUR DENSITY AT BOILING POINT	4.75 kg/m ³
LIQUID DENSITY AT 0°C	1128.8 kg/m ³
LIQUID DENSITY AT 25°C	1033.4 kg/m ³
VAPOUR DENSITY AT 25°C	45.6 kg/m ³
LIQUID HEAT CAPACITY AT 25°C	1.57 kJ/kg-K
VAPOUR HEAT CAPACITY AT 25°C	1.14 kJ/kg-K
VAPOUR PRESSURE AT 25°C	10.42 bar
LIQUID THERMAL CONDUCTIVITY AT 25°C	77 mW/m-K
VAPOUR THERMAL CONDUCTIVITY AT 25°C	14.6 mW/m-K
LIQUID VISCOSITY AT 25°C	126 µPa-sec
VAPOUR VISCOSITY AT 25°C	12.2 µPa-sec

PRESSURE AND TEMPERATURE

PRESSURE	LIQUID (BUBBLE) TEMPERATURE	VAPOUR (DEW) TEMPERATURE
(kPa)	(°C)	(°C)
100	-52.30	-39.45
150	-43.31	-30.58
200	-36.43	-23.80
250	-30.76	-18.24
300	-25.90	-13.48
350	-21.63	-9.30
400	-17.79	-5.56
450	-14.30	-2.16
500	-11.09	0.96
550	-8.11	3.85
600	-5.33	6.54
650	-2.71	9.07
700	-0.24	11.45
750	2.11	13.71
800	4.34	15.86
850	6.48	17.90
900	8.52	19.86
950	10.48	21.73
1000	12.37	23.53
1050	14.19	25.27
1100	15.95	26.94
1150	17.65	28.55
1200	19.30	30.11
1250	20.90	31.62
1300	22.46	33.09
1350	23.97	34.51
1400	25.44	35.90
1450	26.88	37.24
1500	28.27	38.55
1550	29.64	39.83
1600	30.98	41.07
1650	32.28	42.29
1700	33.56	43.48
1750	34.81	44.63
1800	36.04	45.77
1850	37.24	46.88
1900	38.42	47.96
1950	39.57	49.03
2000	40.71	50.07
2050	41.83	51.09
2100	42.92	52.09
2150	44.00	53.08
2200	45.06	54.04
2250	46.11	54.99
2300	47.14	55.92
2350	48.15	56.83
2400	49.15	57.73
2450	50.13	58.61
2500	51.10	59.48

PRESSURE AND ENTHALPY



SAFETY AND STORAGE

Honeywell recommends reading the Material Safety Data Sheet (MSDS) before using the product. Solstice L40X is a mildly flammable refrigerant (ASHRAE class A2L) and needs to be handled appropriately.

LITERATURE

Honeywell has a range of literature available on Solstice L40X.

PACKAGE SIZES

Solstice L40X is available in 4.5kg bottles, 50kg cylinders and ton tanks. For other packing sizes please contact Honeywell distribution network.

LEAKS AND LEAK DETECTION

If a large release of Solstice L40X vapour occurs, the same measures as with any other non-azeotropic blend need to be taken. Hand-held leak detectors can be used for pinpointing leaks. Leak detection is important for protection of those in proximity of the system, refrigerant conservation, equipment protection and performance, and reduction of emissions. Customers should consult the equipment manufacturer for appropriate detectors.



MATERIALS COMPATIBILITY

Honeywell does not recommend the use of chlorinated solvents to clean refrigeration systems or components.

Desiccants

Desiccant driers compatible with Solstice L40X are commercially available.

Individual drier manufacturers should be contacted for specific recommendations.

Lubricants

POE (polyol ester) oil is recommended for using Solstice L40X.

Compressor manufacturers typically qualify specific lubricants for use with their products. Users should check with the equipment manufacturer for the recommended lubricants for their system.

Plastics and elastomers

Solstice L40X is compatible with most common materials. Since there are many different grades and formulations of these materials, we recommend that compatibility testing be performed on the specific grade of materials under consideration and at the conditions of use when designing new systems. Customers should consult the manufacturer or conduct further independent testing.



Solstice is a registered trademark of Honeywell International Inc.

Although Honeywell International Inc. believes that the information contained herein is accurate and reliable, it is presented without guarantee or responsibility of any kind and does not constitute any representation or warranty of Honeywell International Inc., either expressed or implied. A number of factors may affect the performance of any products used in conjunction with user's materials, such as other raw materials, application, formulation, environmental factors and manufacturing conditions among others, all of which must be taken into account by the user in producing or using the products. The user should not assume that all necessary data for the proper evaluation of these products are contained herein. Information provided herein does not relieve the user from the responsibility of carrying out its own tests and experiments, and the user assumes all risks and liabilities (including, but not limited to, risks relating to results, patent infringement, regulatory compliance and health, safety and environment) related to the use of the products and/or information contained herein.

For more information

www.honeywell-refrigerants.com/europe

Honeywell Belgium N.V.

Gaston Geenslaan 14
3001 Heverlee, Belgium
Phone: +32 16 391 212
Fax: +32 16 391 371
E-mail: fluorines.europe@honeywell.com

FPR-021-2017-06-EN | V1
© 2021 Honeywell International Inc.

THE
FUTURE
IS
WHAT
WE
MAKE IT

Honeywell